



Available online at [www.sciencedirect.com](http://www.sciencedirect.com)

ScienceDirect

[www.elsevier.com/locate/jes](http://www.elsevier.com/locate/jes)



## Corrigendum

# Corrigendum to “Dithizone-functionalized C18 online solid-phase extraction-HPLC-ICP-MS for speciation of ultra-trace organic and inorganic mercury in cereals and environmental samples” Journal of Environmental Science 115 (2022) 403-410

Ying Wang<sup>1,2,3</sup>, Ailing Zhu<sup>1,4</sup>, Yingying Fang<sup>1,2,3</sup>, Changjun Fan<sup>5</sup>,  
Yanli Guo<sup>5</sup>, Zhiqiang Tan<sup>2</sup>, Yongguang Yin<sup>1,2,3,4,\*</sup>, Yong Cai<sup>1,2,6</sup>,  
Guibin Jiang<sup>2,3</sup>

<sup>1</sup>Laboratory of Environmental Nanotechnology and Health Effect, Research Center for Eco-Environmental Sciences, Chinese Academy of Sciences, Beijing 100085, China

<sup>2</sup>State Key Laboratory of Environmental Chemistry and Ecotoxicology, Research Center for Eco-Environmental Sciences, Chinese Academy of Sciences, Beijing 100085, China

<sup>3</sup>University of Chinese Academy of Sciences, Beijing 100049, China

<sup>4</sup>School of Environment, Hangzhou Institute for Advanced Study, UCAS, Hangzhou 310024, China

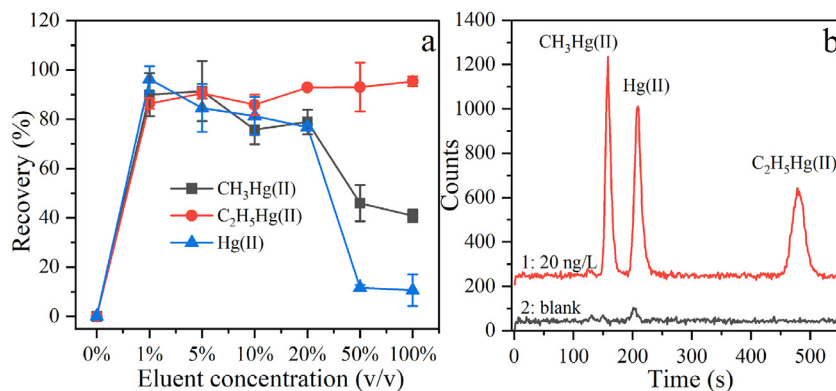
<sup>5</sup>Shimadzu China Innovation Center, Shimadzu (China) Co. LTD, Beijing 100020, China

<sup>6</sup>Department of Chemistry and Biochemistry, Florida International University, Miami, Florida 33199, United States

The authors regret <the wrong file for Appendix A and the mistake in [Figure 3](#); the correct Appendix has been updated as the attachment.>

The authors would like to apologize for any inconvenience caused.

\* Corresponding author:  
E-mail: [ygyin@rcees.ac.cn](mailto:ygyin@rcees.ac.cn) (Y. Yin).



**Fig. 3 – Effect of 2-mercaptoethanol on the elution of enriched CH<sub>3</sub>Hg(II), Hg(II) and C<sub>2</sub>H<sub>5</sub>Hg(II) on the SPE column. a: The effect of 2-mercaptoethanol concentration on signal of Hg species. The Hg concentration was 5 ng/L. b: The chromatograms of Hg species after 2-mercaptoethanol elution (1% v/v) of enriched 20 ng/L CH<sub>3</sub>Hg(II), Hg(II) and C<sub>2</sub>H<sub>5</sub>Hg(II) (1: 20 ng/L) and the following secondary elution (2: blank). The sample volume of Hg species was 5 mL.**